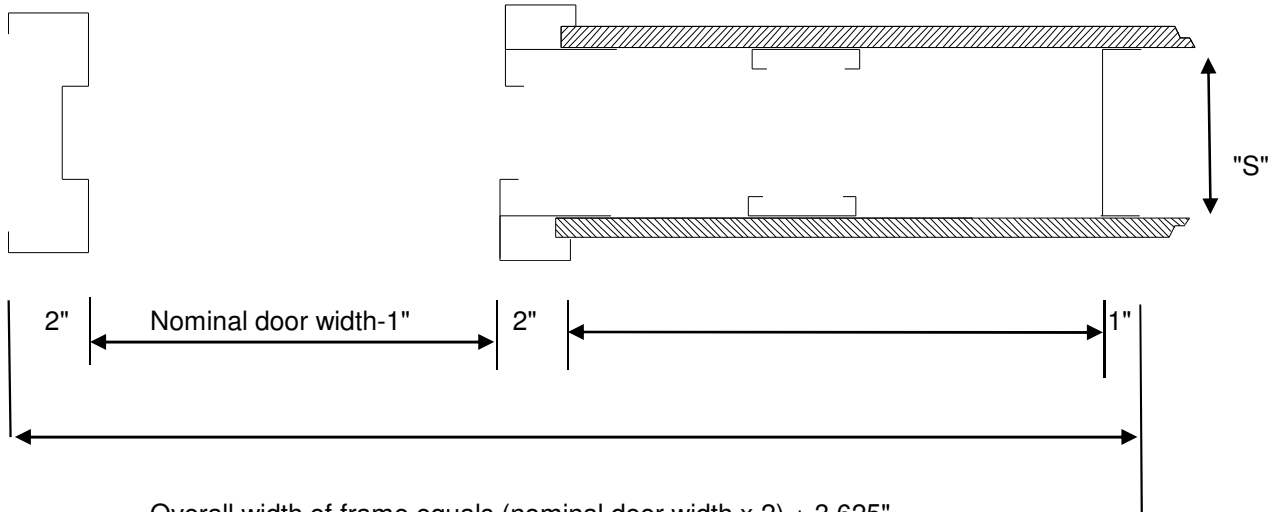
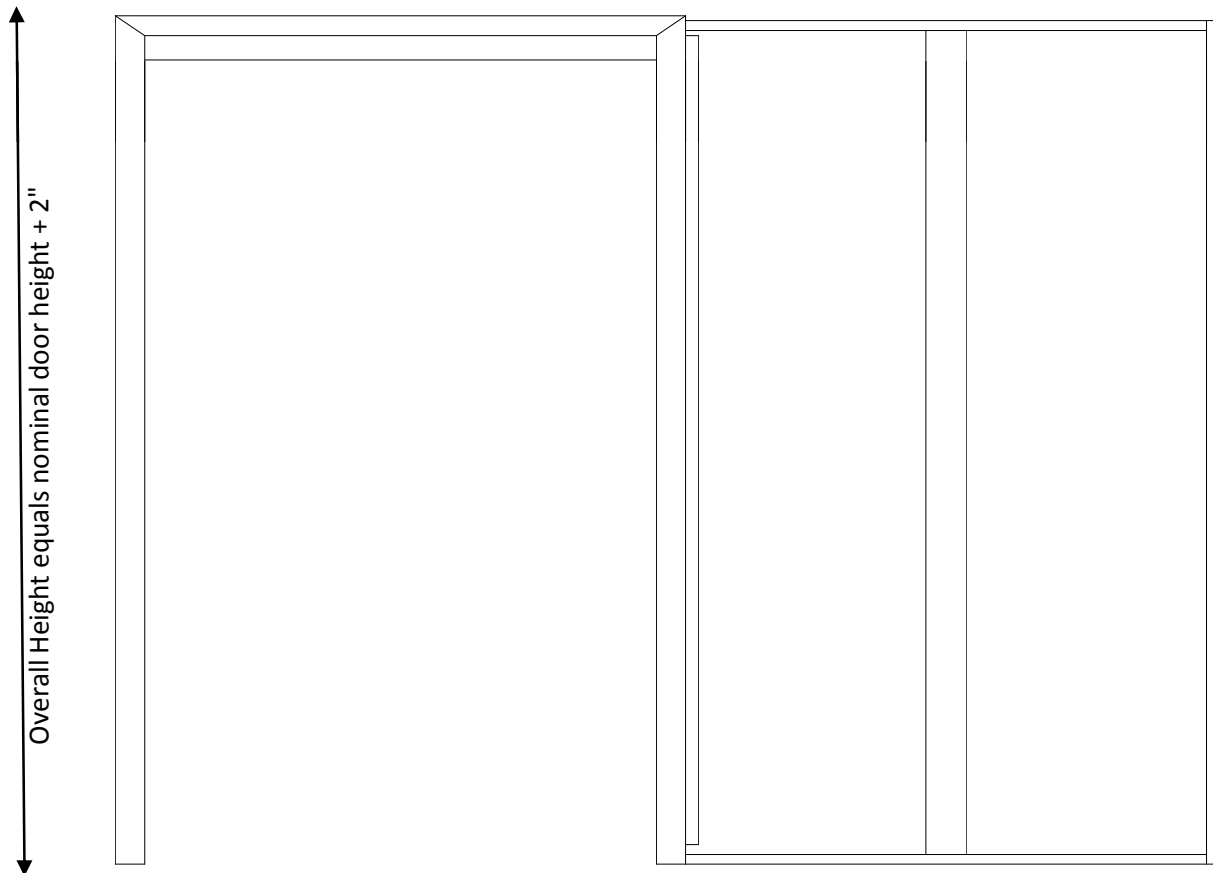


Pocket Door and Frame Detail Page 1 of 3

"S" equal actual stud depth



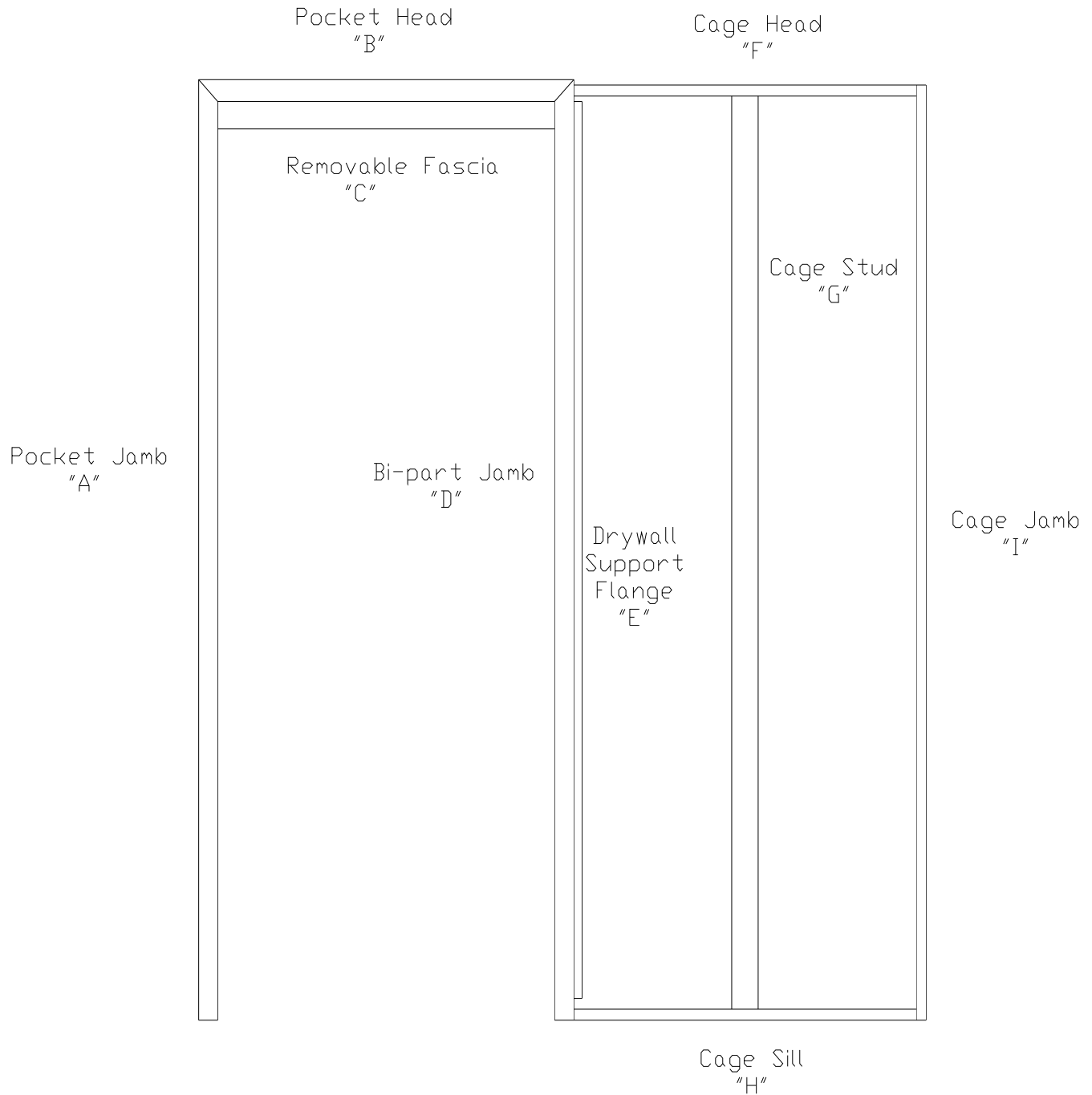
Overall width of frame equals (nominal door width x 2) + 3.625"



# HMF EXPRESS

(Toll Free) Phone 866-452-1845 Fax 910-452-1848

## Pocket Door and Frame Detail, Page 2 of 3

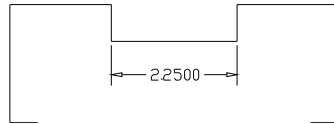


# HMF EXPRESS

(Toll Free) Phone 866-452-1845 Fax 910-452-1848

## Pocket Door and Frame Detail, Page 3 of 3

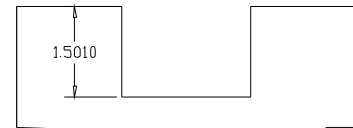
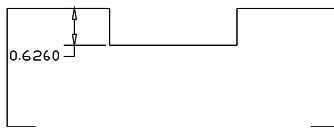
Pocket Jamb  
"A"



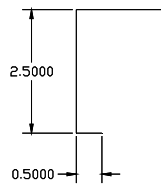
5/8" pocket head

1 1/2" pocket head

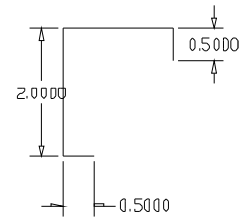
Pocket Head  
"B"



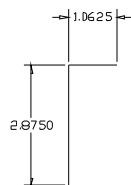
Removable Fascia  
"C"



Bi-part Jamb  
"D"



Drywall  
Support  
Flange  
"E"



Cage Head  
"F"

Cage Sill  
"H"

Cage Jamb  
"I"



Cage Stud  
"G"

