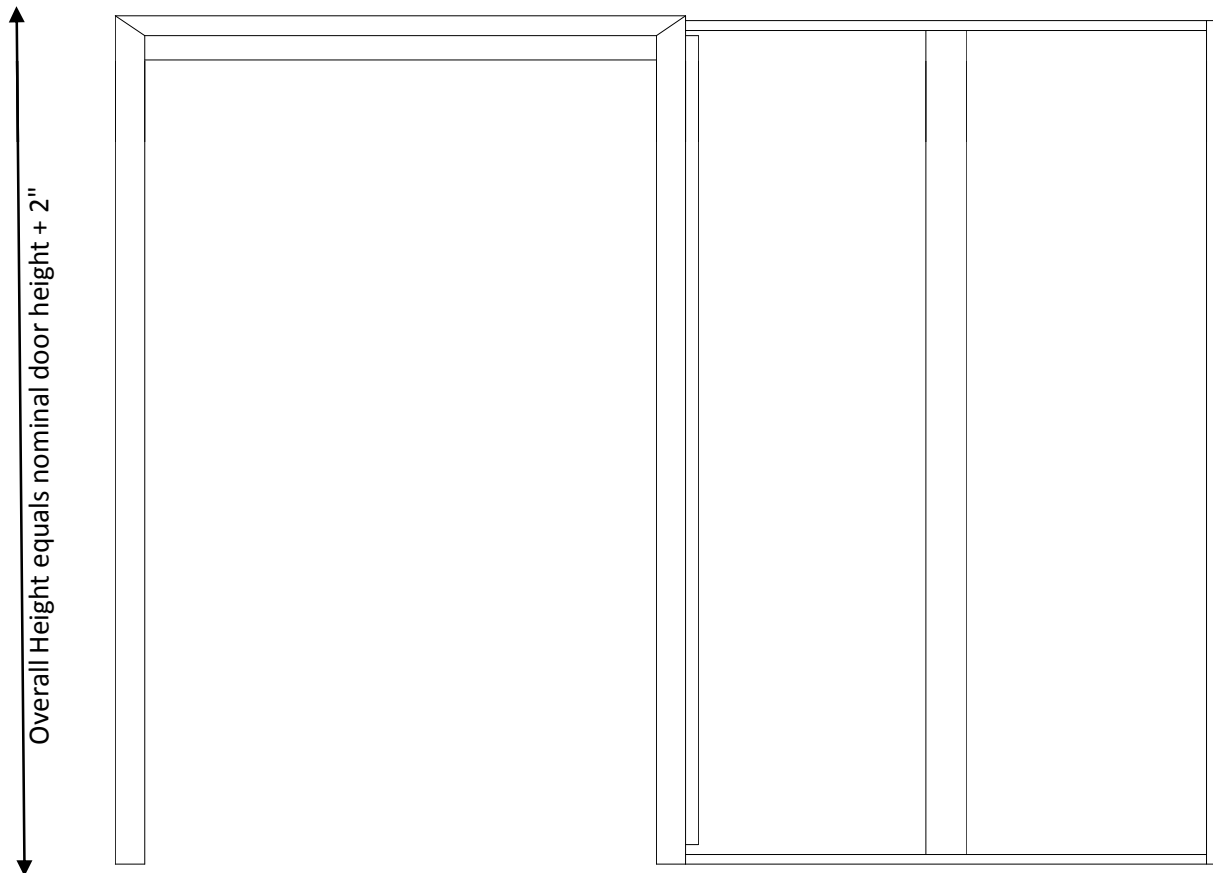
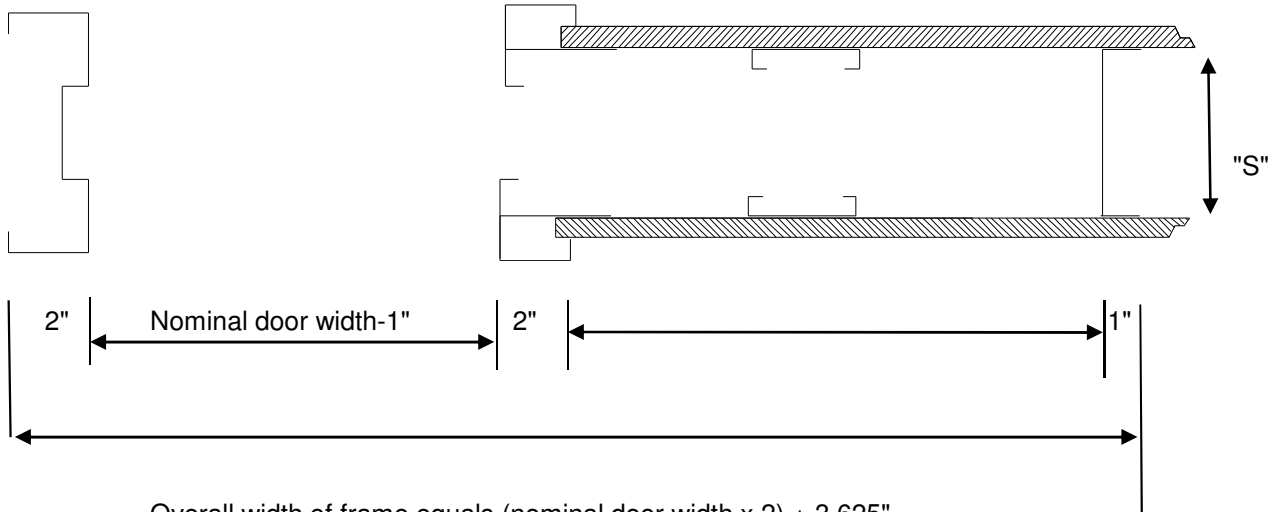


Welded Pocket Frame with Cage, Page 1 of 3

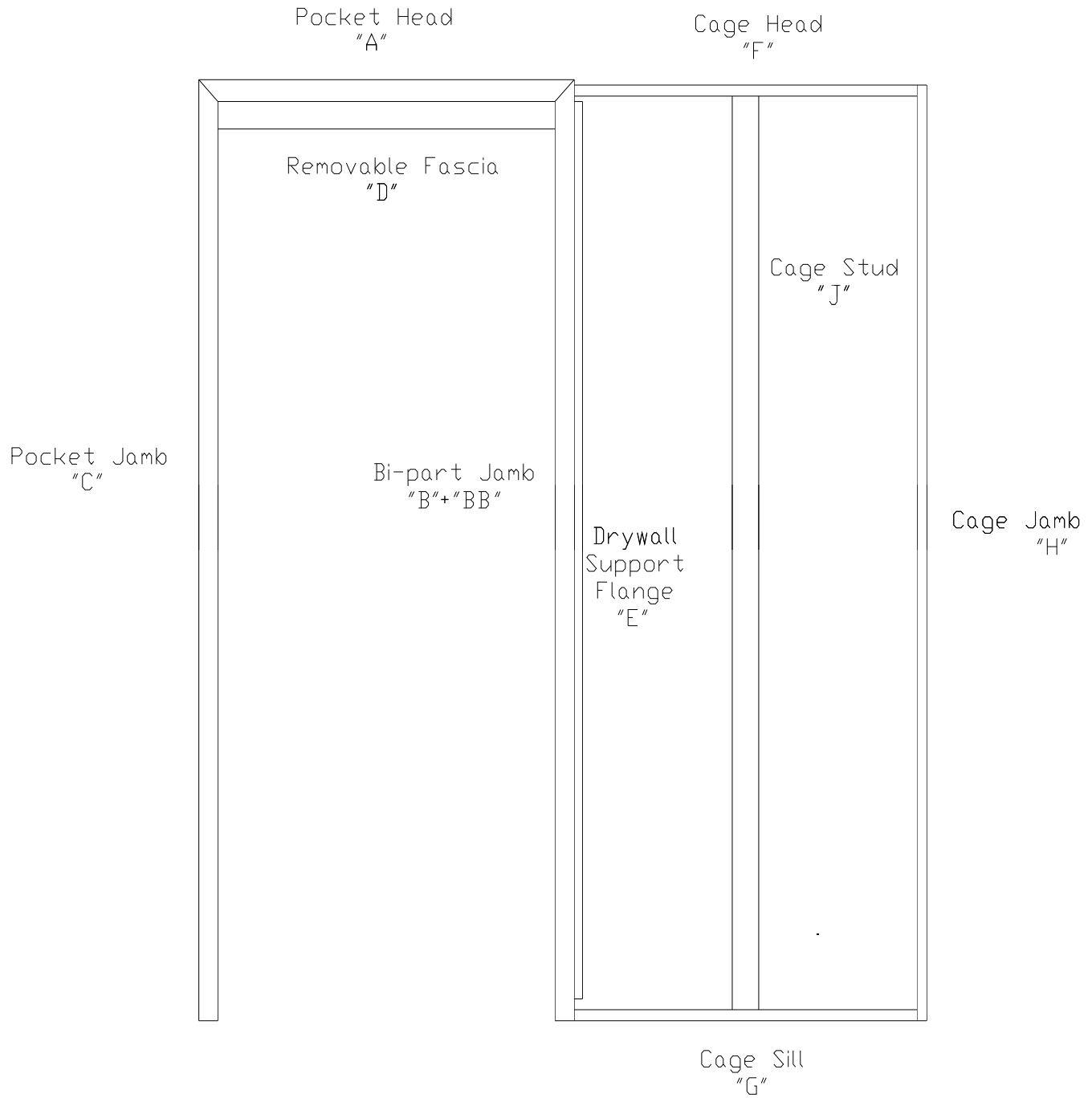
"S" equal actual stud depth



HMF EXPRESS

(Toll Free) Phone 866-452-1845 Fax 910-452-1848

Welded Pocket Frame with Cage, page 2 of 3 3

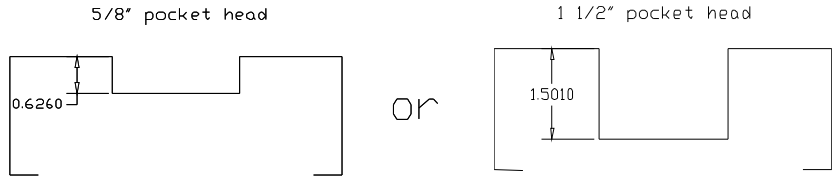


HMF EXPRESS

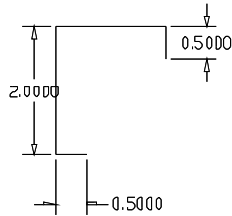
(Toll Free) Phone 866-452-1845 Fax 910-452-1848

Welded Pocket Frame with Cage, Page 3 of 3

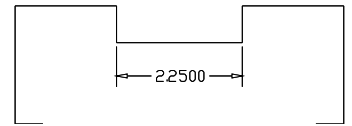
Pocket Head
"A"



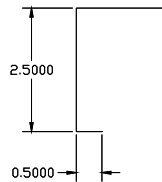
Bi-part Jamb
"B" + "BB"



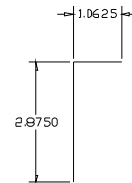
Pocket Jamb
"C"



Removable Fascia
"D"



Drywall
Support
Flange
"E"



Cage Head
"F"

Cage Sill
"G"

Cage Jamb
"H"



Cage Stud
"J"

