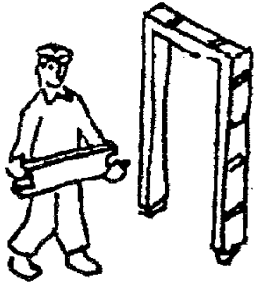
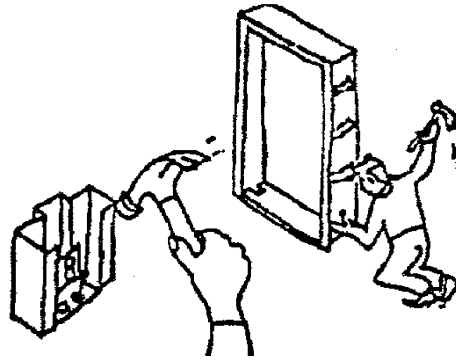


U.L. STEEL DOOR FRAME FOR STEEL STUD WALL



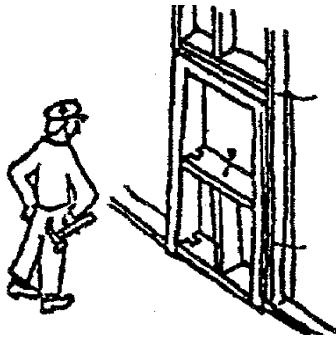
1. PLACE WOOD SPREADER AT BASE OF FRAME TO SET OPENING WIDTH OF FRAME



2. FASTEN BASE ANCHOR TO FLOOR



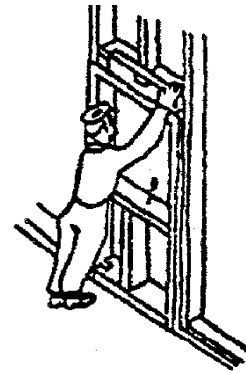
3. SET FLOOR CHANNELS AND INSTALL STEEL STUD CHANNELS



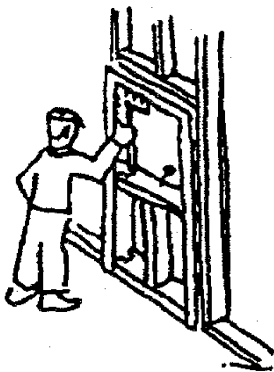
4. PLACE AND SUPPORT WOOD SPREADER AT CENTER OF FRAME



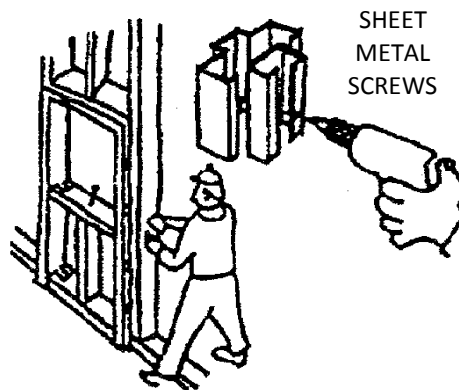
5. PLUMB JAMBS



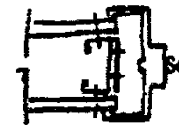
6. LEVEL HEAD



7. SQUARE CORNERS AND CHECK OPENING WIDTH



8. ATTACH STEEL STUDS TO ANCHORS



GYPSUM BOARD

HERE IS A TYPICAL WALL CONDITION